



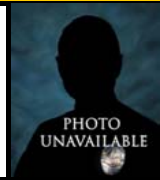
COMPSTAT

Operations - Central Bureau Profile

05/23/21 to 06/19/21



BUREAU COMMANDING OFFICER: Alfred Labrada
Rank: ACT DEPUTY CHIEF
Date of Rank: July 7, 2019
Date Assigned Bureau: December 18, 2020
LAPD Appointment Date: May 17, 1993



ASSISTANT COMMANDING OFFICER: Vacant
Rank: COMMANDER
Date of Rank:
Date Assigned Bureau:
LAPD Appointment Date:

CRIME STATISTICS for week ending 06/19/21

VIOLENT CRIMES	05/23/21 TO 06/19/21		% Change	04/25/21 TO 05/22/21		% Change	YTD 2021	YTD 2020	% Change	YTD 2021	YTD 2019	% Change
	05/23/21 TO 06/19/21	04/25/21 TO 05/22/21		04/25/21 TO 05/22/21	03/28/21 TO 04/24/21							
HOMICIDE	8	9	-11.1%	9	5	80.0%	57	45	26.7%	57	35	62.9%
RAPE (121,122)	13	20	-35.0%	20	13	53.8%	95	113	-15.9%	95	136	-30.1%
RAPE (815,820,821)	8	5	60.0%	5	8	-37.5%	44	63	-30.2%	44	101	-56.4%
TOTAL RAPE	21	25	-16.0%	25	21	19.0%	139	176	-21.0%	139	237	-41.4%
ROBBERY	179	163	9.8%	163	168	-3.0%	1,050	1,015	3.4%	1,050	1,270	-17.3%
AGGRAVATED ASSAULTS	403	403	0.0%	403	417	-3.4%	2,354	2,124	10.8%	2,354	2,054	14.6%
TOTAL VIOLENT	611	600	1.8%	600	611	-1.8%	3,600	3,360	7.1%	3,600	3,596	0.1%

PROPERTY CRIMES	05/23/21 TO 06/19/21		% Change	04/25/21 TO 05/22/21		% Change	YTD 2021	YTD 2020	% Change	YTD 2021	YTD 2019	% Change
	05/23/21 TO 06/19/21	04/25/21 TO 05/22/21		04/25/21 TO 05/22/21	03/28/21 TO 04/24/21							
BURGLARY	136	177	-23.2%	177	177	0.0%	1,064	1,349	-21.1%	1,064	1,115	-4.6%
MOTOR VEHICLE THEFT	393	445	-11.7%	445	399	11.5%	2,629	2,442	7.7%	2,629	1,880	39.8%
BTFV	393	446	-11.9%	446	393	13.5%	2,846	3,268	-12.9%	2,846	3,389	-16.0%
PERSONAL /OTHER THEFT	354	413	-14.3%	413	343	20.4%	2,162	2,695	-19.8%	2,162	3,776	-42.7%
TOTAL PROPERTY	1,276	1,481	-13.8%	1,481	1,312	12.9%	8,701	9,754	-10.8%	8,701	10,160	-14.4%
TOTAL PART I	1,887	2,081	-9.3%	2,081	1,923	8.2%	12,301	13,114	-6.2%	12,301	13,756	-10.6%

Child/Spousal Abuse (Part I & II)*	253	251	0.8%	251	234	7.3%	1,457	1,509	-3.4%	1,457	1,700	-14.3%
SHOTS FIRED	59	74	-20.3%	74	58	27.6%	416	309	34.6%	416	259	60.6%
SHOOTING VICTIMS	28	27	3.7%	27	22	22.7%	171	129	32.6%	171	118	44.9%

ARREST STATISTICS for week ending 06/19/21

ARRESTS	05/23/21 TO 06/19/21		% Change	04/25/21 TO 05/22/21		% Change	YTD 2021	YTD 2020	% Change	YTD 2021	YTD 2019	% Change
	05/23/21 TO 06/19/21	04/25/21 TO 05/22/21		04/25/21 TO 05/22/21	03/28/21 TO 04/24/21							
HOMICIDE	5	6	-16.7%	6	9	-33.3%	42	30	40.0%	42	38	10.5%
RAPE	7	5	40.0%	5	2	150.0%	23	35	-34.3%	23	53	-56.6%
ROBBERY	43	41	4.9%	41	52	-21.2%	290	314	-7.6%	290	363	-20.1%
AGGRAVATED ASSAULT**	181	154	17.5%	154	154	0.0%	995	1,051	-5.3%	995	1,125	-11.6%
BURGLARY	29	45	-35.6%	45	40	12.5%	201	314	-36.0%	201	239	-15.9%
LARCENY	18	29	-37.9%	29	23	26.1%	146	312	-53.2%	146	618	-76.4%
MOTOR VEHICLE THEFT	77	92	-16.3%	92	91	1.1%	531	427	24.4%	531	335	58.5%
TOTAL VIOLENT	236	206	14.6%	206	217	-5.1%	1,350	1,430	-5.6%	1,350	1,579	-14.5%
TOTAL PART I	360	372	-3.2%	372	371	0.3%	2,228	2,483	-10.3%	2,228	2,771	-19.6%
TOTAL ALL ARRESTS	1,213	1,335	-9.1%	1,335	1,255	6.4%	7,721	8,947	-13.7%	7,721	13,089	-41.0%

*Part II Child/Spousal Abuse Simple Assaults not included in Part I Aggravated Assaults above to comply with the FBI's Uniform Crime Reporting guidelines.

**Statistics include domestic violence.

N.C. - Not Calculable

Statistics are based on the date the crime or arrest occurred.
 Arrest statistics include arrests made by outside agencies.